

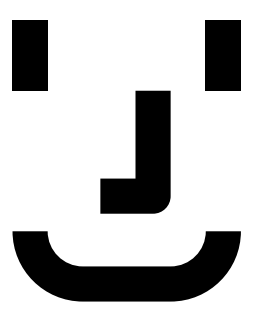
IMOVE Mobile Workforce

Deployment Timeline: 12 weeks

Price starting from: 2.5 M THB (67,500 Euro)

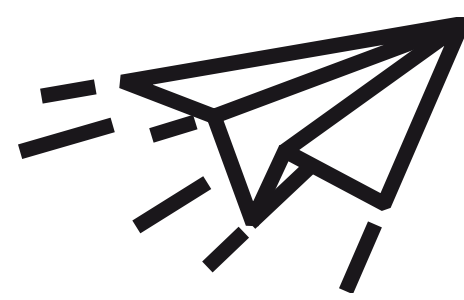
One Time License: 1.98 M THB/ 250 license

Benefits



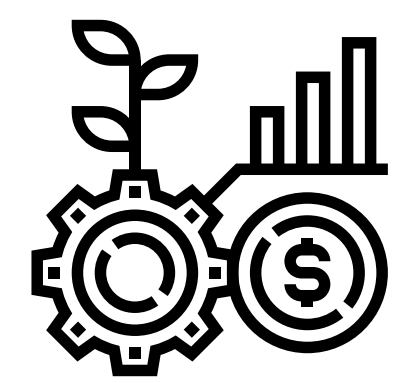
Simplify

Provides simplified HR process and powerful solution with technology and seamless integration.



Quick & Lean

Enables faster time to value with clearly defined scope of implementation, pre-configuration content but flexible enough to allow some personalized design.



Cost Effective

Deliver best business practice, pre-configured rapid deployment solution, localize compliance and regulatory reporting which could save up to at least 40% time and effort reduction compared to similar scope of traditional project.

Solution

- 1** Save labor hours and increase efficiency by allowing employees and supervisors to take care of many different human resources-related tasks.
- 2** Avoided entry errors and other mistakes by allowing employees to enter their own information.
- 3** Streamline and simplify the process with predefined mainstream workflow.
- 4** Shorter time and worthy with furnished useful design.
- 5** Seamless the self-service with existing core SAP HCM.

Challenges

- Inessential processes and clumsy tasks consume all over resource and time.
- The complication of maintaining multiple systems.
- The difficulty of digital transformation to mobile platform within desired timeline and budget.

Scope

My Profile

- View Information
 - Employee photo
 - Personal Data
 - Alternative Names
 - Addresses
 - Bank Details
 - Family Member
 - Education
 - Communication
 - Personal IDs
- Maintain Information
 - Personal Data
 - Alternative Names
 - Addresses
 - Communication

Employee Lookup

- Easy and quick way to contact with via simple call or email
- View Information
 - Employee name
 - Employee ID
 - Employee photo
 - Phone number
 - E-mail address
 - Company name
 - Organizational unit
 - Position name
 - Personnel area
 - Supervisor
- Search
 - First name
 - Last name
 - Employee ID

Leave/Attendance

- Integrated calendar
- Partial-day leave/attendance: able to select by half-day period or specific time
- Consecutive of full-day and partial-day leave: able to request in single record
- Automatic validating leave/attendance balance with remaining and pending request
- Standard collision validation
- Standard work schedule validation
- Configurable available leave/attendance type on ESS
- View leave balance with summary of available, used, planned, and entitlement leave
- Withdraw completed leave request with approval

Overtime

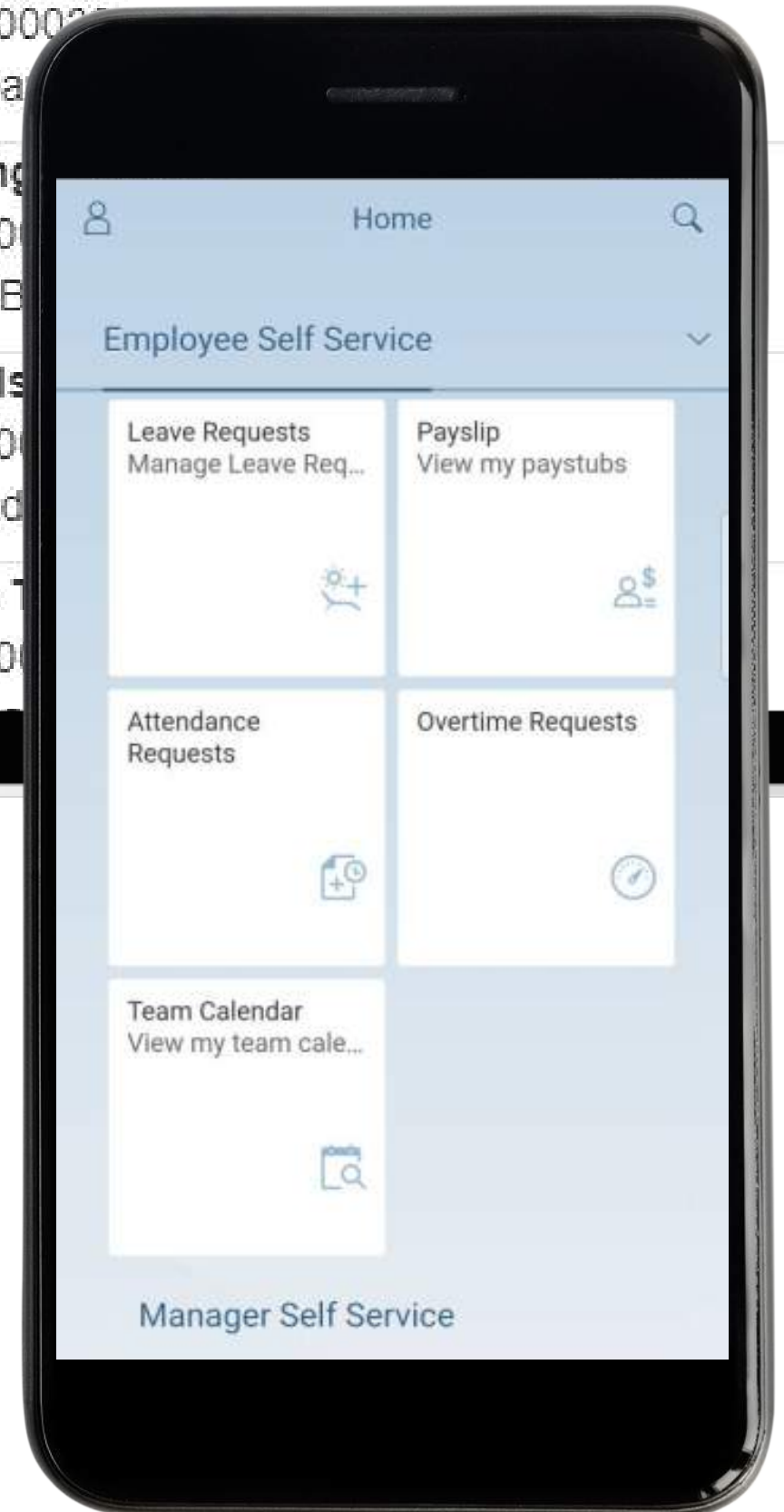
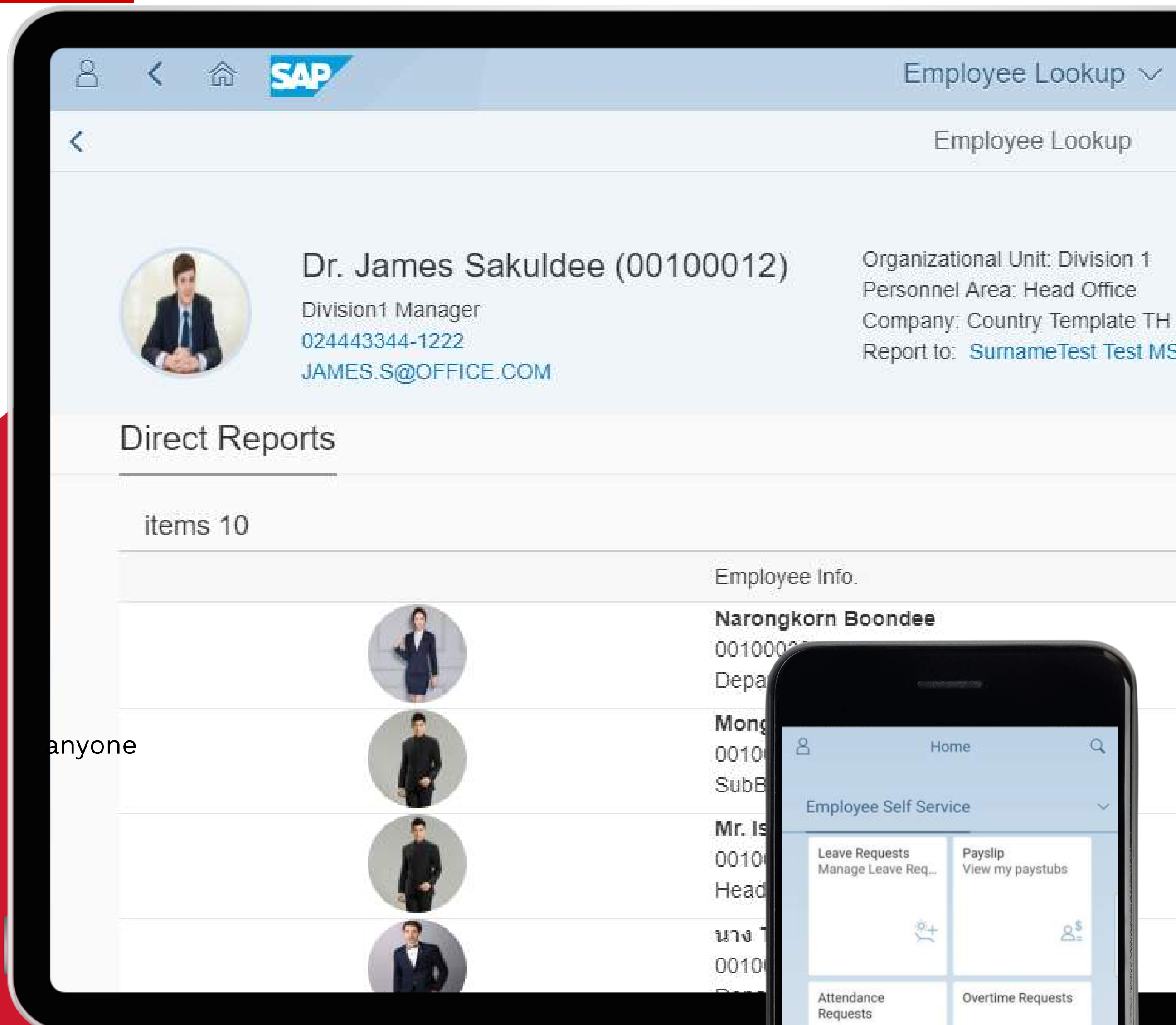
- Integrated calendar
- Compensation type
- Paid or unpaid overtime break
- Cost allocation by cost center
- Standard collision validation
- Standard work schedule validation

Team Calendar

- View the upcoming events, trainings, leaves, overtime and work schedule of your colleagues or direct reports
- Display timeline in week or hours
- Display work schedule with substitution data (infotype 2003)
- Leave including pending request
- Attendance including pending request
- Overtime including pending request

Payslip

- Check or download a digital version of all their payslip issued for each payroll period
- Support both normal cycle and off cycle
- PINCODE for payslip
- Configurable how long periods of payroll that employee able to access their payslip
- Searchable by payroll period, start date – end date, payroll type or payment date
- Apply with existing payslip form on SAP HCM



Dashboard

- Headcount
- Turnover rate
- Retention rate
- Leave quota
- Year of service
- Age
- Gender
- Employee movement
- Termination reason

My Request

- Show all requests with real-time status

My Inbox

- Process all your tasks in a single place
- Support Delegation
- Mass Approve/reject (required SAP S/4HANA)

Admin Monitoring

- View requests details and status
- Manage responsible employees by organization

Approval Workflow

- Direct supervisor
- HR administration
- Attachments
- Comment
- Email notification

Authorization

- Employee role
- Manager role
- Admin role

Languages: Thai or English